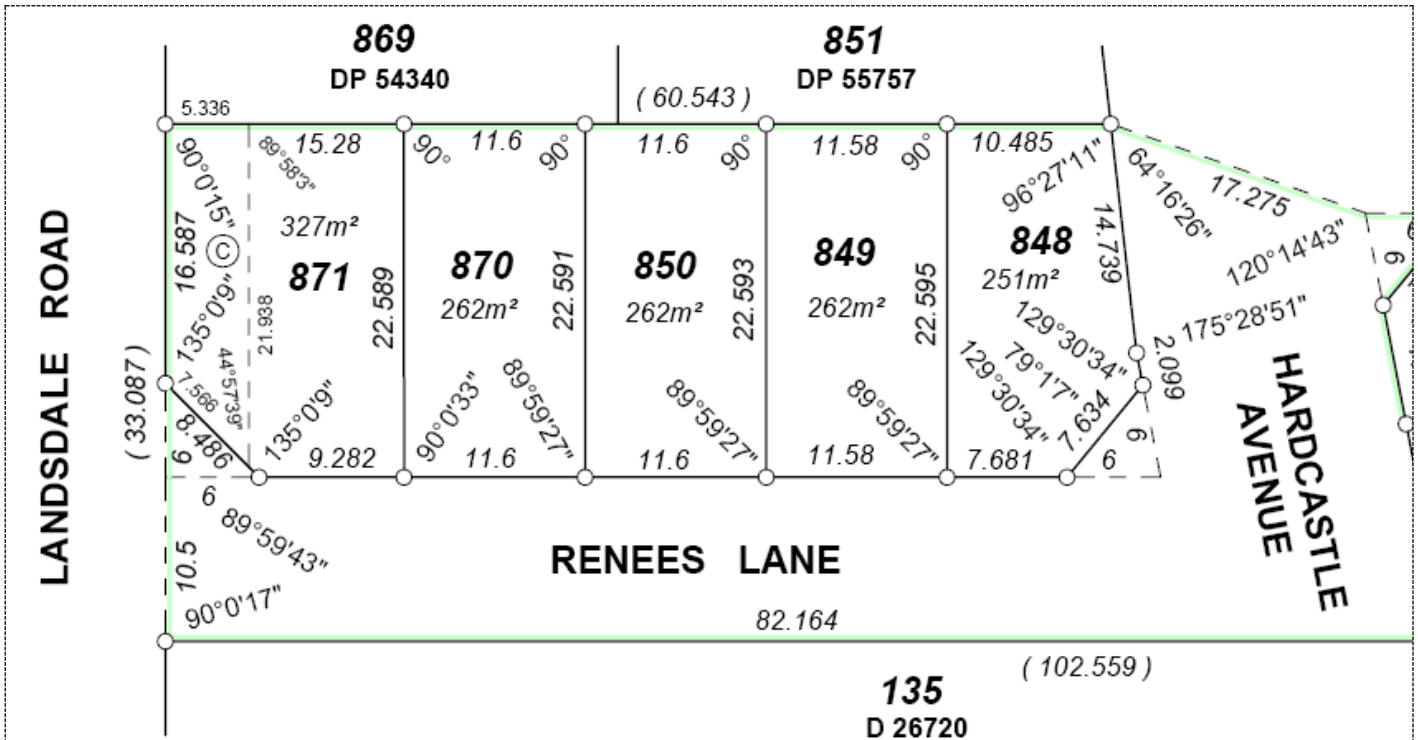


LOT	STREET	SIZE	FRONTAGE	PRICE
850	Renees Lane	262sqm	11.6m	\$225,000



**Estate Information**  
 No covenants apply  
 Opposite proposed POS – R40 zoning  
**TITLED LOT**



**LANDWEST**  
 estate agency



**RONDELLE MAY 0402 283 911**

rondelle@landwa.com.au

www.landwa.com.au

PO Box 4383, Victoria Park WA 6979

DISCLAIMER: All areas and dimensions are subject to survey. Prices, availability and incentives subject to change without notice. Whilst every care has been taken with the preparation of these particulars which are believed to be correct, they are in no way warranted by the selling agents or our clients in whole or in part and should not be construed as forming part of any contract. Any intending buyers are advised to make enquiries as they deem necessary to satisfy themselves on all matters in this respect.